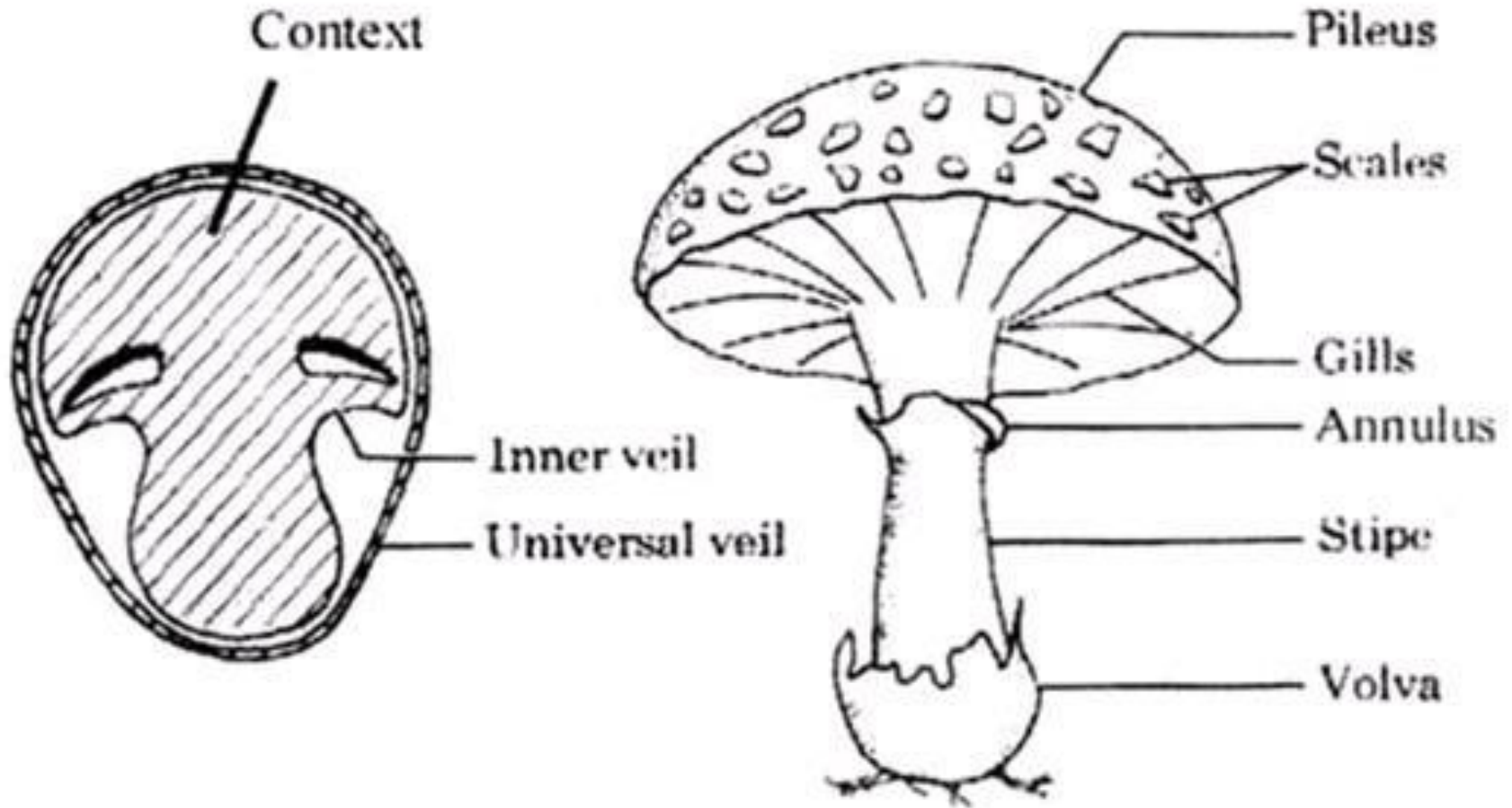


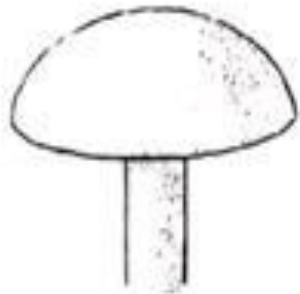
Mushroom

Identification

Mushroom morphology



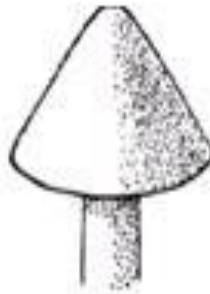
Mushroom cap shapes



convex



bell-shaped



conical



knobbed

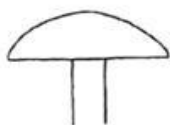


flat



sunken

Mushroom cap surfaces



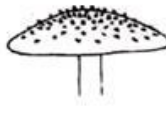
smooth



velvety



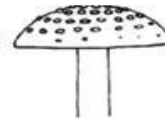
hairy or fibrous



raised scales

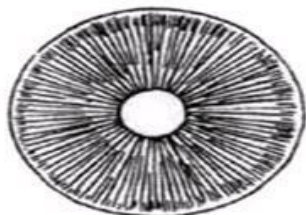


flat scales

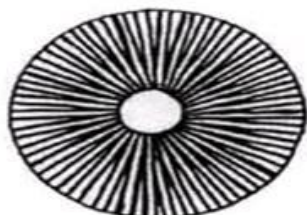


patches

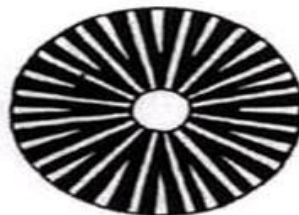
Gill spacing



crowded



close



distant

Gill tissue arrangements



parallel



interwoven



divergent

Spawn



Spawn and its Production



Identification of Fleishy Fungi



Agaricus



Calocybe



Volvariella



Pleurotus



Lentinula



Auricularia



Ganoderma



Amanita



Lactarius



Gyromitra



Clavaria



Morchella



Volvariella



Polyporus



Pleurotus



Volvariella



Calocybe



Schizyophyllum



Tremella



Mycena

Field trials conducted for the evaluation of strains



Field trials conducted for the evaluation of strains of milk





1



2



3



4

Phase –I of composting ----- first turning after mixing urea and pile being formed with the help of a Pile Former (1) third turning being given by breaking the heap and adding water (2), picture of a front loader tractor (3) and compost turning machine (4) for mechanical composting



Machinery & Equipments required



Big Autoclave (Horizontal type)

Pressure Cooker:



Boiler



Laminar Flow:



Weighing Machine:



Steel or cemented racks:



BOD Incubators:



Refrigerators:



Wire mesh Tray:



Disease In mushroom

Green mould- *Trichoderma viride*



a.



b.

Spawn contaminants



Bacterial contamination



Aspergillus niger



Trichoderma viride



Rhizopus nigricans



Aspergillus flavus



a.

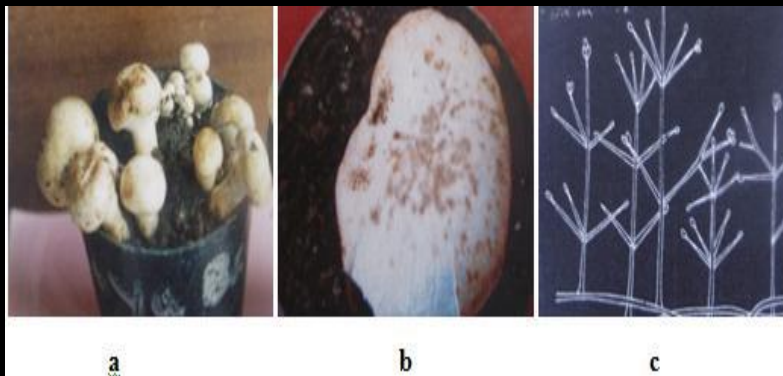
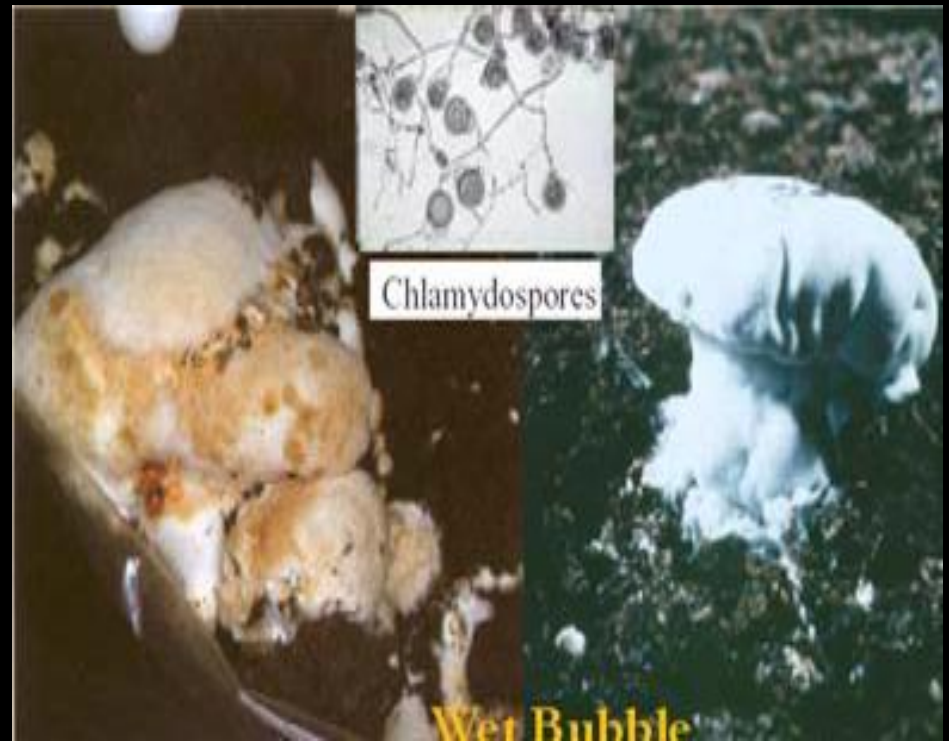


b.

BUBBLE

DRY BUBBLE DISEASE OF MUSHROOMS: (Pathogen : *Verticillium fungicola* Preuss. Hassebr)

WET BUBBLE DISEASE OF MUSHROOM: (Pathogen: *Mycogone perniciososa* Magn.)



COBWEB DISEASE OF MUSHROOMS: (Pathogen- *Cladobotryum dendroides* (Bull : Merat)

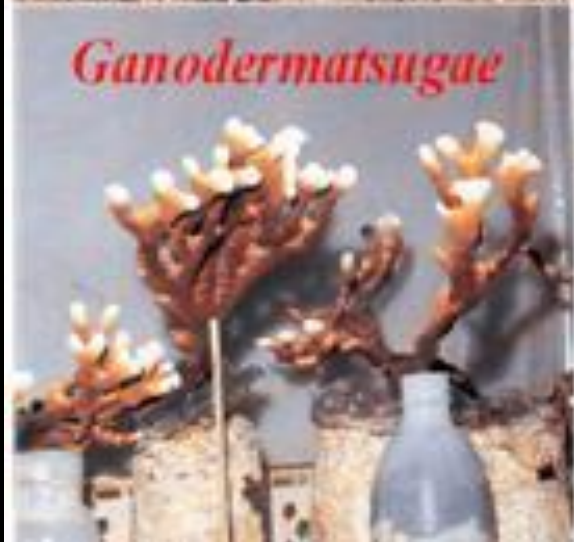


Bacterial Diseases of Mushrooms

- 1. Bacterial blotch and bacterial pit diseases of white button mushroom:



Medicinal mushroom



Medicinal Products

Agaricus blazei Schizophyllum commune:



G. lucidum



- www.k8449r.weebly.com
- www.anilrana13014.weebly.com
- Thank you